



golfestate

M3M Profile - a story of continued success

- A team of experienced professionals with a global reach and a vision to excel
- Prime land in excess of 650 acres in most enviable location of Gurgaon
- A debt free & cash rich organization
- Engaged in all spheres of Real Estate across verticals viz. Group Housing, Commercial, Hotel, Institutional development & SEZ



Our Commitment

- To promote an environment of fairness, integrity & transparency through best management practices
- To deliver innovative & best-in-class landmark projects
- To create a matchless standard of quality & lifestyle
- To be eco-friendly and deliver technologically advanced projects



Our Philosophy

- Life demands personalization
- Luxury covets intimacy
- Desire commands the invention of a new language beyond the vocabulary of clichés

Together, these form the foundation of everything we do at M3M.



WE ARE LUXURY

We are M3M Group, ready to change the real estate scape in India.

M3M
Our Expertise. Your Joy.



WE ARE PRIDE

We are M3M Group, ready to change the real estate scape in India.



WE ARE FORESIGHT

We are M3M Group, ready to change the real estate scape in India.

M3M
Our Expertise. Your Joy.



Where would all this lead to...



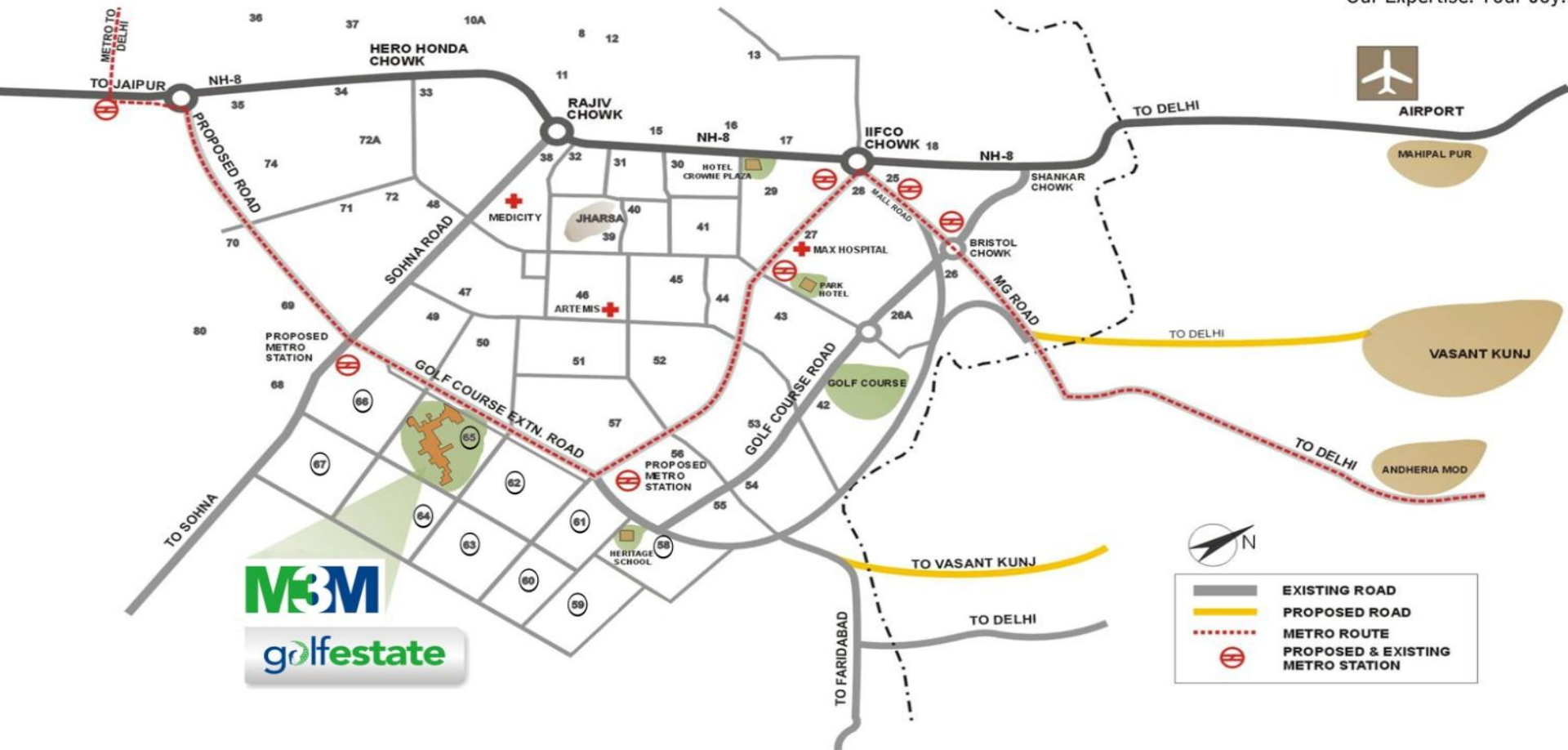




Location of Luxury

- Sector 65, Golf Course Extn. Road, Gurgaon
- 30 min drive from the airport
- On the metro corridor
- Prominent schools - Heritage, G.D. Goenka, Shriram are in close proximity
- Reputed hospitals - Max, Artemis, Medicity and Fortis are in vicinity
- Shopping malls and like Metropolitan and DT Mega Mall are a short drive away
- Close to major corporate houses like Hewitt, E & Y, Cairn Energy









PERFECT BLEND OF LANDSCAPE AND ARCHITECTURE

All images and floor plans are representative and are subject to change in the best interest of the development



THE EPITOME OF MAJESTY

All images and floor plans are representative and are subject to change in the best interest of the development

Our world-class “Standard” features

- Over 110% Greens
- Sliding blinds offering a dynamic view to the building, instead of a static one
- Extraordinary outdoor living and dining spaces
- State-of-the-art kitchens fitted with all appliances
- Five-fixture modern master bathrooms
- Jogging tracks on the roof top









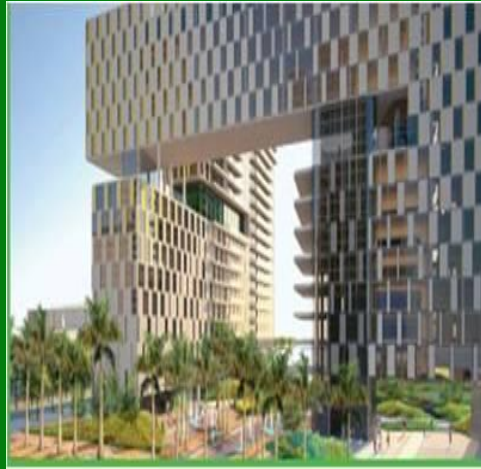




Architect :

The Arcop Group, Montreal, Canada

Arcop is an architectural practice in constant evolution over five decades and has built a solid reputation over the years. Landmark projects - “Garden Estate” & “Laburnum” in Gurgaon and the “Mughal Sheraton” in Agra.



Golf Course Design :

Graham Cooke & Associates, Montreal, Canada

Graham Cooke & Associates(GCA) is a top-ranked golf course architectural firm that has designed and overseen the construction of over 100 golf courses worldwide.





Landscape Design :

NIP Paysage, Montreal, Canada

NIP Paysage is a leader of a new wave of landscape architects. Their work spans from preliminary design to construction supervision.



Interior Design :

Cecconi Simone Inc. Toronto , Canada

With over 25 years of practice, the firm has distinguished itself with an ability to generate creative solutions to the design problems facing the contemporary client.

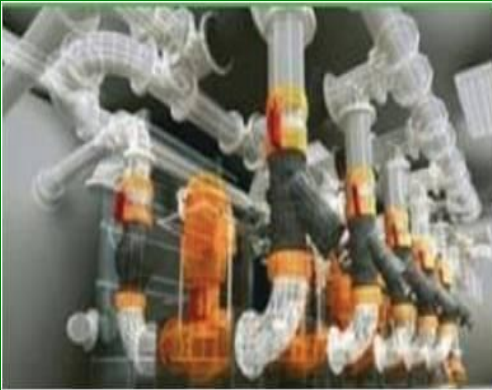




Structural Engineering :

Franz Knoll, NCK, Montreal, Canada & TPC Delhi

TPC has come a long way in providing total solutions for a broad spectrum from individuals to leading public sector undertakings, Corporate, MNC's and Financial institutions.



Mechanical Engineering :

Dupras Ledoux, Montreal, Canada & MJC Delhi

MJC is constantly exploring new advancements in technology that provide real benefits to their equipment.



The pedigree of M3M

The advent of living in luxury

- A Signature 9 hole Executive Golf Course
- The largest & finest condominium project spread over 75 acres in Delhi NCR
- World-class clubhouse to take you on a journey from health, art to entertainment
- Towers standing on high stilts presenting a spectacular view of the golf course
- Doctor-on-call, Concierge-on-call, Automatic car wash & 3 level underground car park
- Plethora of water bodies along the greens with extensive landscaping
- Unisex gym, Dance and Aerobic studio, Salon, etc.



Why the Golfing life?

- World over the preferred lifestyle of the “Rich & Famous”
- Promotes healthy living
- Enchanting landscaping & water bodies

M3M Golf Estate is a pure and pristine “In City” Golf and Resort living experience!





PARKLAND GOLF COURSE



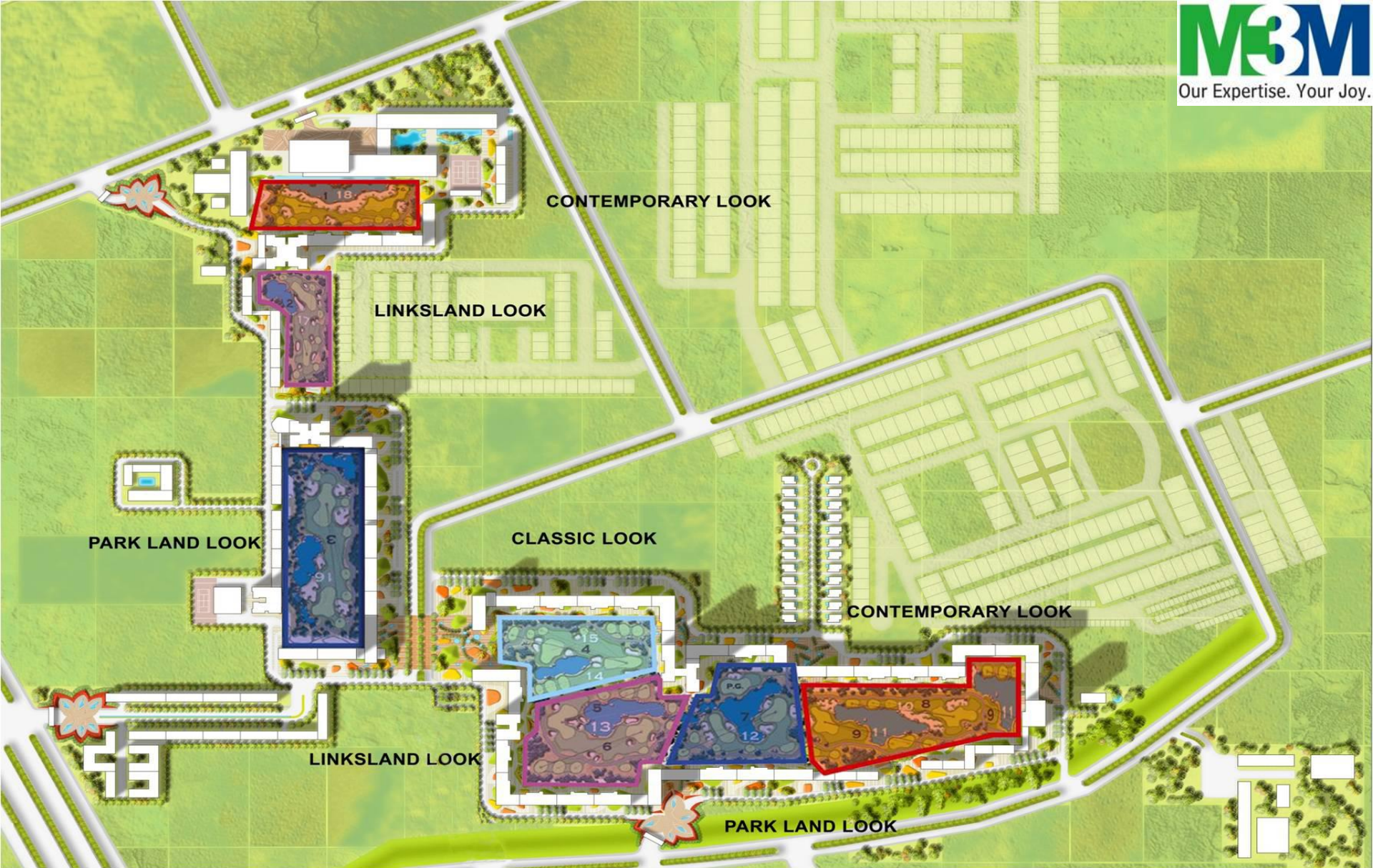
CLASSIC GOLF COURSE



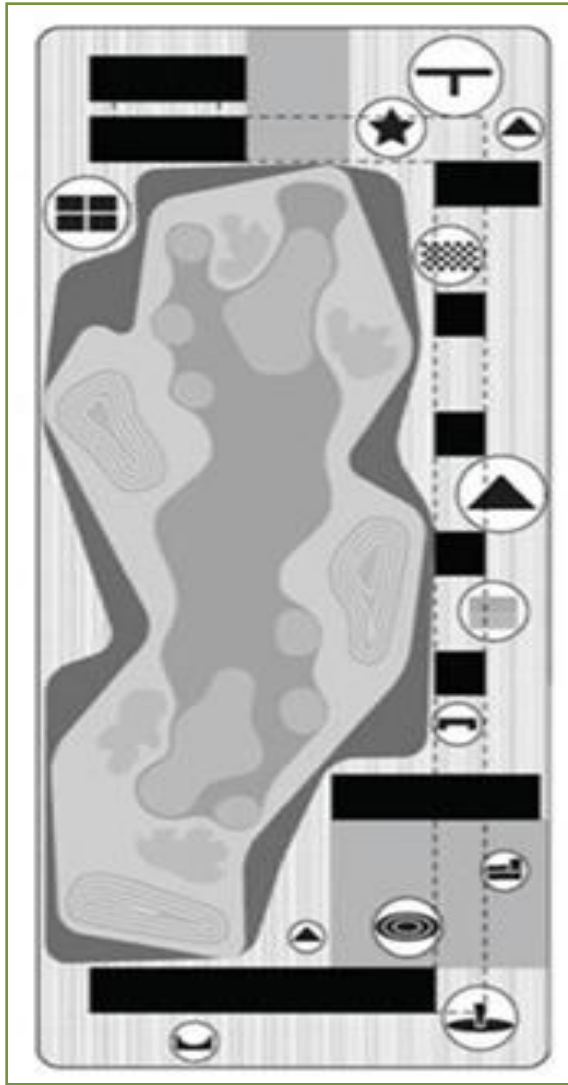
LINKSLAND GOLF COURSE



CONTEMPORARY GOLF COURSE







**COMMUNAL SPACE / LANDSCAPE PROGRAMS
A DYNAMIC LIVING SPACE**

Dimension Program		Large Feature	Medium Feature	Small Feature
		± 30m x 15m / 450 sq m	± 20m x 10m / 200 sq m	± 12m x 6m / 72 sq m
1	Planted Topography			
2	Food Gardens			
3	Playground			
4	Amphitheatre			
5	Rock / Shade Garden			
6	Water Feature			
7	Wading Pool			
8	Outside Gym			
9	Vertical Vegetal Structures			
10	Skate Park			
11	Table Games/Social Area			
12	Picnic Area			
13	Climbing			
14	Observatory/Terrace			



NIPPAYSAGE
ARCHITECTS & LANDSCAPE ARCHITECTS



golfestate

ENGAGING AMENITIES

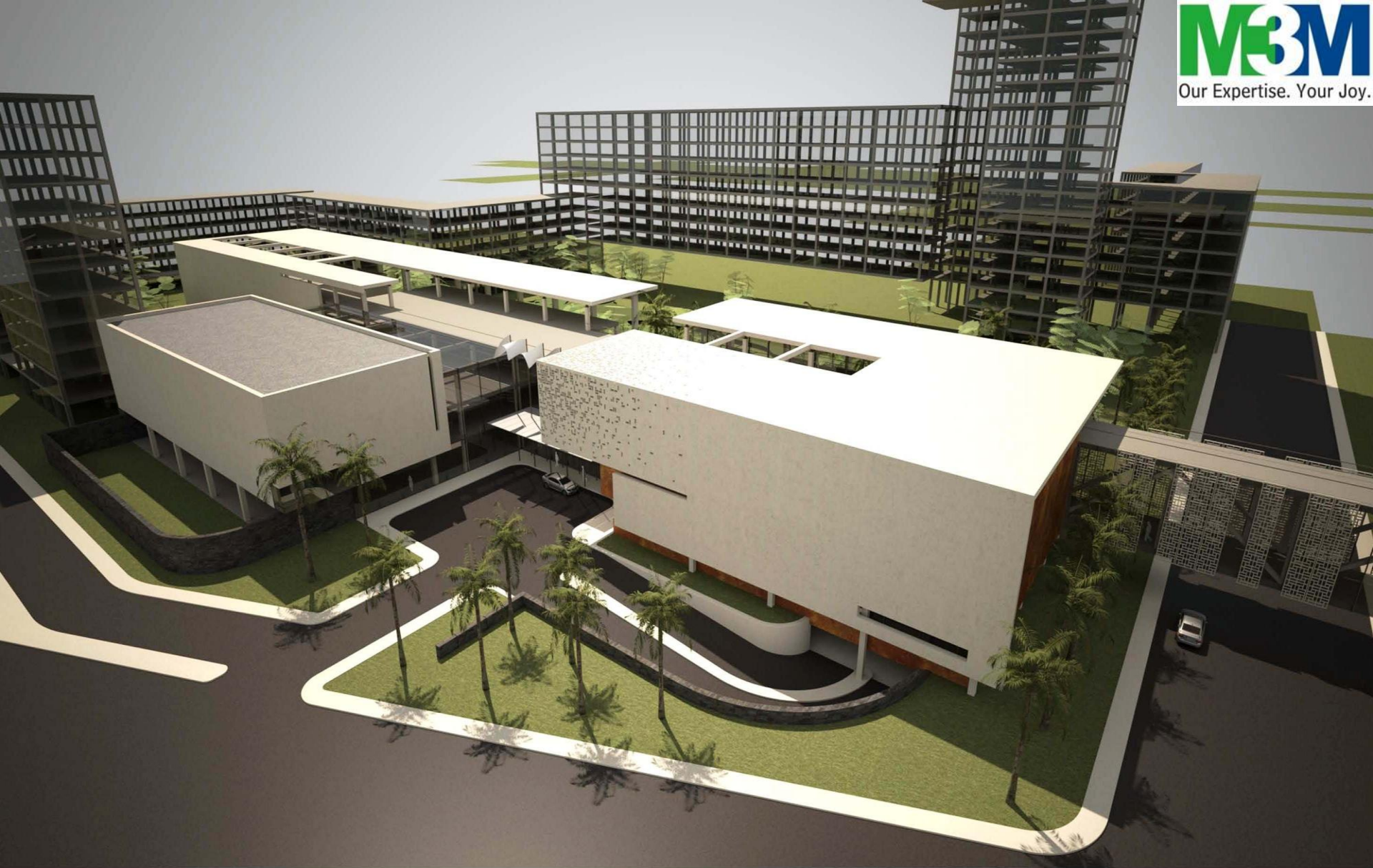






CLUBHOUSE - JOURNEY OF HEALTH, ART TO ENTERTAINMENT

All images and floor plans are representative and are subject to change in the best interest of the development







M3M
Our Expertise. Your Joy.



UNDERSTANDING & SHAPING YOUR DESIRES

All images and floor plans are representative and are subject to change in the best interest of the development



BEGINNING OF A NEW JOURNEY...

All images and floor plans are representative and are subject to change in the best interest of the development